



**INDI**

**INSTITUTO DE DESENVOLVIMENTO INTEGRADO DE MINAS GERAIS**

*The Minas Gerais Investment Promotion Agency*



## INDI

### MISSION

To attract, consolidate and retain industrial, commercial and services projects in Minas Gerais.

### ATTRIBUTION

INDI is:

- ▲ The official investment promotion agency of Minas Gerais;
- ▲ The entrance door for investments in the State;
- ▲ An active agent in Minas Gerais planning process
- ▲ A link between entrepreneurs and governmental institutions;





INDI

## Support to investments



SEDE

**CEMIG**



**CODEMIG**

**JUCEMG**





## Minas Gerais' main figures



### TERRITORY

- 587,000 km<sup>2</sup>
- Larger than countries such as France, Sweden and Spain

### ECONOMY

- GDP 2009: USD 162 billion
- Exports 2009: US\$ 19,5 bi – 2010: US\$ 22 bi(estimated)
- Second largest industrial park in the country
- Leader in Brazil for mining, metallurgy, cement production, coffee, dairy, biotechnology, etc

### SOCIAL

- Population: 19,6 million inhabitants
- Children at school: 2.6 million
- 18 thousand elementary schools
- 289 colleges/universities

### INFRASTRUCTURE

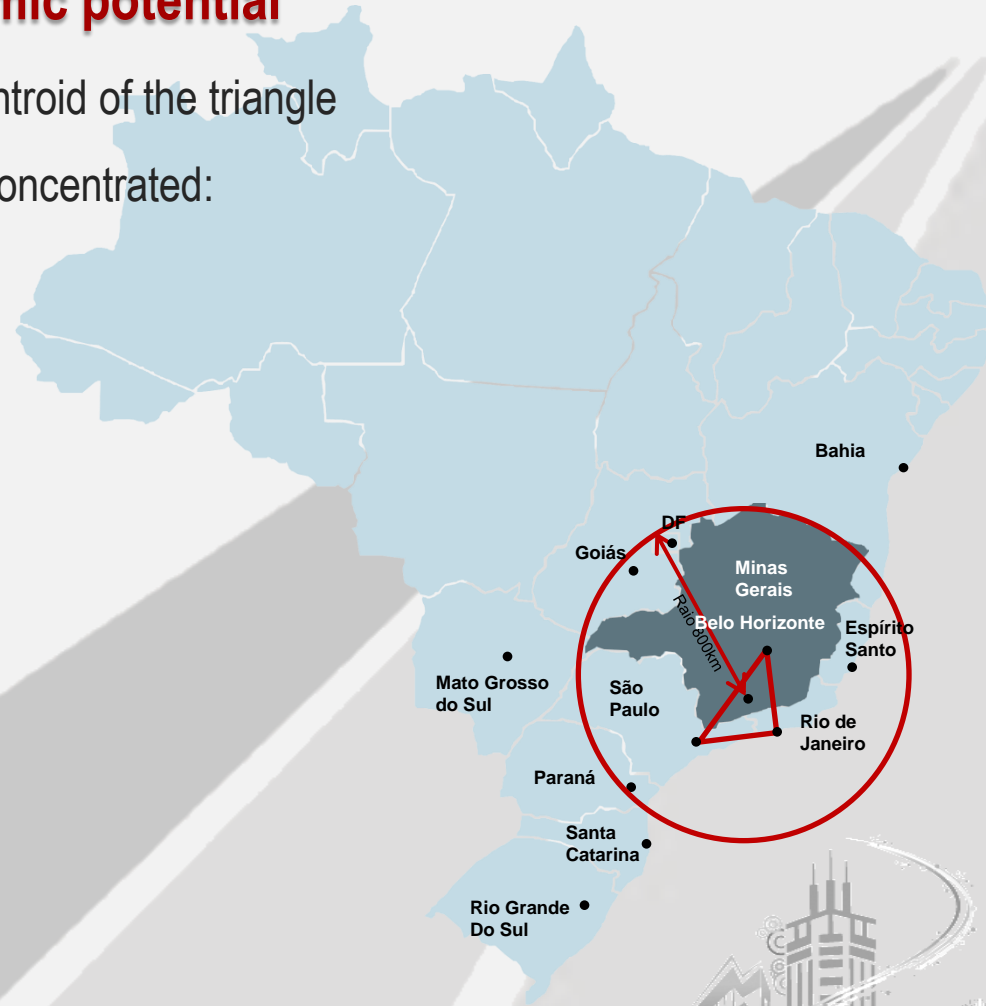
- 265.000 km of roads (23,000 km paved)
- 5.329 km of railways
- 66 airports: 1 international and industrial
- 18,5% of total energy generation in Brazil
- Broad telecom network: 4.15M fixed lines and 8.8M mobile lines



## Economic potential

Within a circumference centered at the centroid of the triangle  
BH – SP – RJ and radius of 800 km are concentrated:

- ▲ 50% of the Brazilian population;
- ▲ 65% of the national GDP;
- ▲ 65% of the retailer purchase in Brazil;
- ▲ 65% of the industrial production;
- ▲ 73% of the national market of electricity.







## ENERGY

Type of Plant	Quantity	Power (GW)	%
Hydroelectrics	166	17,10	94.88%
Windpower	1	0,01	0.01%
Thermoelectrics	43	0,92	5.12%
<b>Total</b>	<b>210</b>	<b>18,03</b>	<b>100%</b>

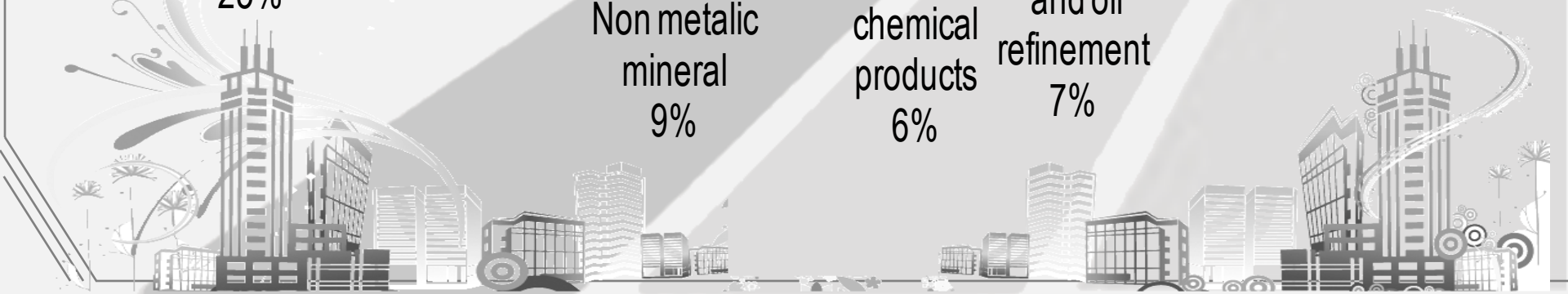
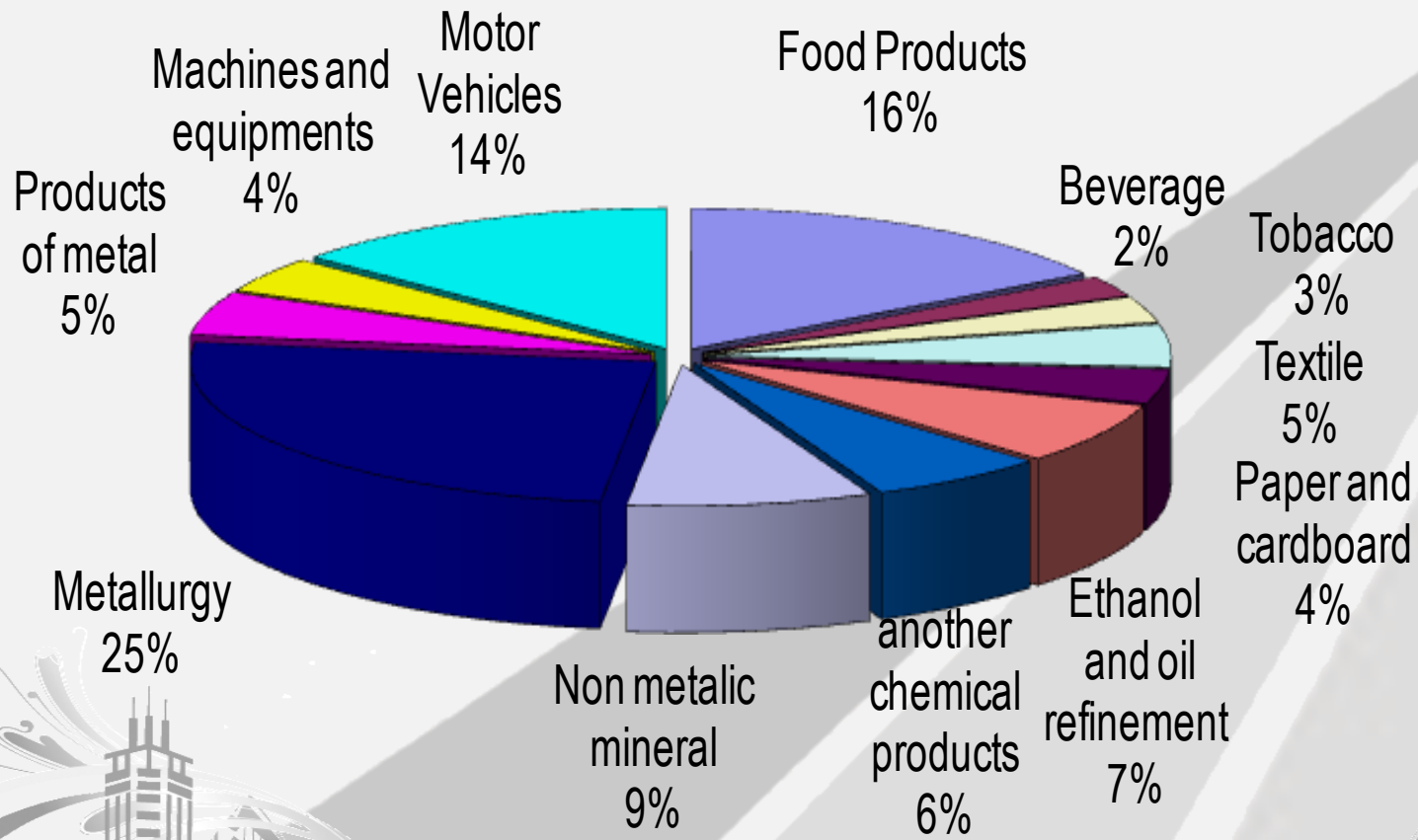
Generation capacity in Brazil: 103 GW

- ▲ 26% of Brazil's industrial consumption of electric power (2008);
- ▲ 335 PCHs (potential) will add up 3,6 GW;
- ▲ 85 under construction;
- ▲ Potential co-generation of ethanol plants: 1250 MW;
- ▲ Windpower potential: 36 GW (until 100m high).





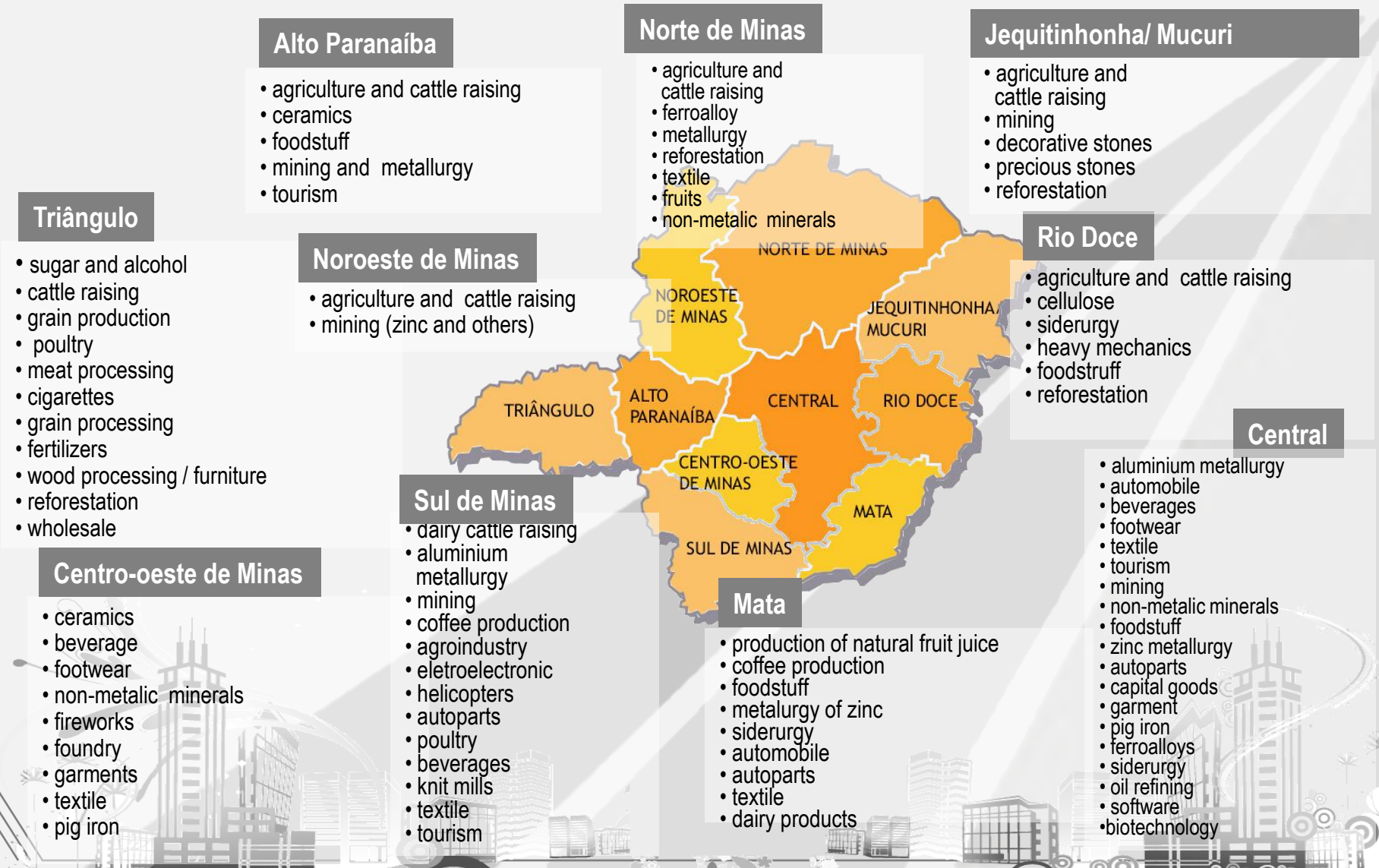
## Industry structure







## Economic activities established





## Economic activities potential





# INDI

## Mining

- Iron ore
- Gold
- Diamond
- Zinc
- Phosphate
- Limestone
- Colored Gemstones
- Slates
- Niobium
- Marble
- Granite
- Pig iron
- Nickel
- Manganese
- Copper
- Bauxite
- Coal
- Cobalt
- Platinum
- Aluminum



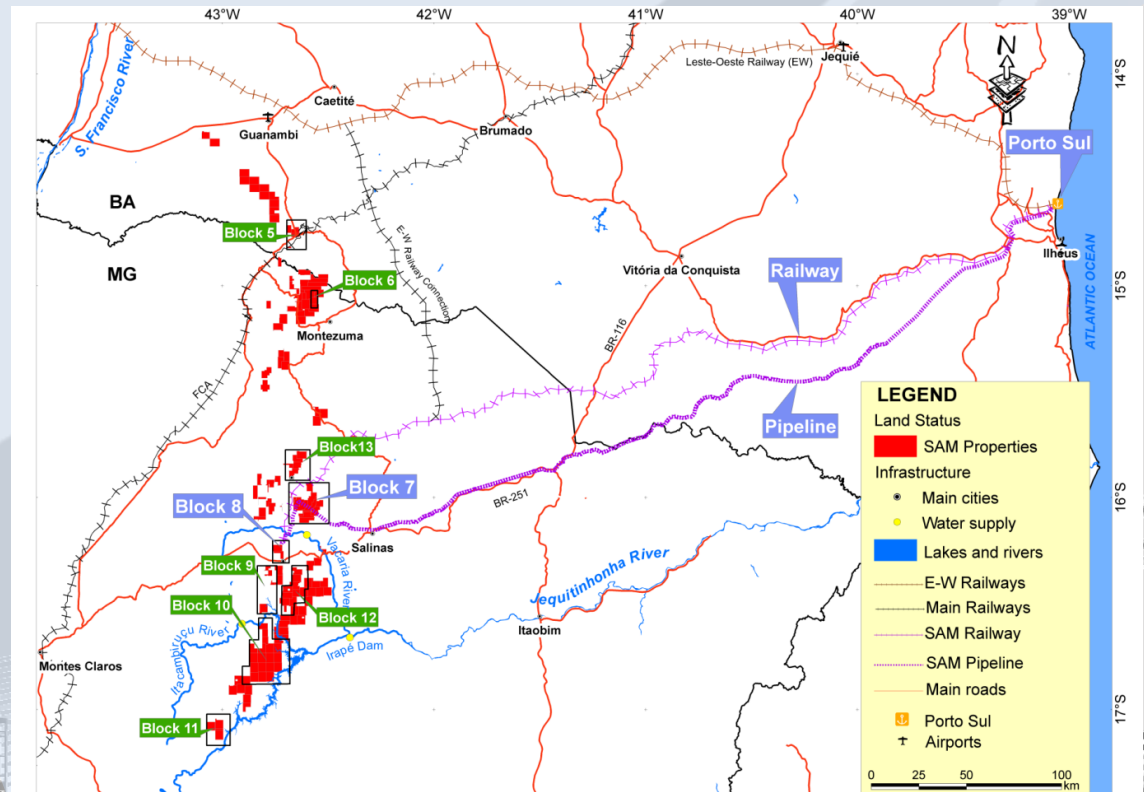
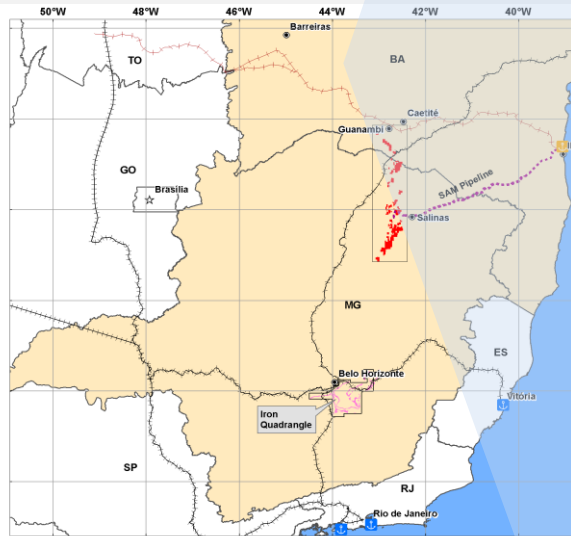
- World's largest niobium producer
- Brazil's largest iron ore producer and exporter
- Largest pig iron hub in the country





# Mining

- ▲ Reserves: 20 billion tons of iron ore.
- ▲ Announced investments of US\$ 3.6 billion until 2014.
- ▲ Foreseen investments : more than US\$ 10 billion. Mines opening, new steel plant, new railway branch line and new port in the State of Bahia





## Biotechnology

- . 85 companies in the area of pharmaceutical compounds and research materials
- . Largest concentration of biotechnology firms in Latin America



The largest insulin plant in the world



ST Jude Medical Brasil Ltda in Belo Horizonte





## Automobile and Auto Parts



The largest FIAT plant in the world



Mercedes Benz plant  
Producing class C cars to US market

**MAGNETI  
MARELLI**

**Teksid**

**FPT**  
POWERTRAIN TECHNOLOGIES

**IVECO**

**CNH**

- . 2nd largest car manufacturer in Brazil
- . 8,3 % of all vehicles exported nationally in 2008
- . 25.8 % of all domestic vehicle production



INDI

## Agribusiness

**Milk:** the Country's largest dairy producer. Its 7.6 billion liters of milk produced annually represent approximately one third of the total produced in Brazil

**Beef:** responsible for the production of 551 thousand tons of meat, with 22.5 million heads of cattle, the State has the second largest cattle herd in Brazil

**Fruits:** the largest area of irrigated agriculture in South America and Brazilian largest producer of market garden seeds

**Ethanol:** Minas Gerais is the second producer of ethanol in Brazil (2,6 billion liters )





INDI

## Agribusiness

**Coffee:** the largest producer in Brazil

**Corn:** the second largest producer in Brazil

**Charcoal:** largest reforester in Brazil with 870 thousand hectares

**Soybean:** the fifth largest producer in Brazil



USINA CORURIFE



BUNGE



3corações



Cargill





INDI

## IT

- . Qualified professionals in Information Technology
- . High level of workforce graduating from specialized institutions and local universities.



Google's Research and Development Center in Latin America is located in Belo Horizonte



Infosys®

Business Consulting and strategic IT services outsourcing in Belo Horizonte



Source: UFMG



bh.tec

Technological park





## Some International Companies Established in Minas Gerais





## Some International Companies Established in Minas Gerais



**IVECO**



**USIMINAS** U



**DELPHI**  
Automotive Systems



**Cargill**





INDI



INDI

INSTITUTO DE DESENVOLVIMENTO INTEGRADO DE MINAS GERAIS

*The Minas Gerais Investment Promotion Agency*

**Mauricio Cecilio**

DIRECTOR

**+ 55 31 3915 2838**

**[mcecilio@indi.mg.gov.br](mailto:mcecilio@indi.mg.gov.br)**

