



GUAMÁ

Science and
Technology
Park

Priority goals of government

Planning and deploying technological parks in three municipalities of the state with infrastructure of fiber optic networks



Metrobél

Metropolitan network
of Belém

Metrosan

Metropolitan network
of Santarém

Metromar

Metropolitan network
of Marabá

Guamá STP: Governance Model

Agreement between UFPA, UFRA and State Government

- Government with the support of the BNDES has invested in infrastructure: R\$ 82million
- Management through the Guamá Foundation
- The foundation of private non-profit
- Contract with the Government of the State
- Investment and maintenance of the STP in the early years R\$6 million/5 years



Technological Focus

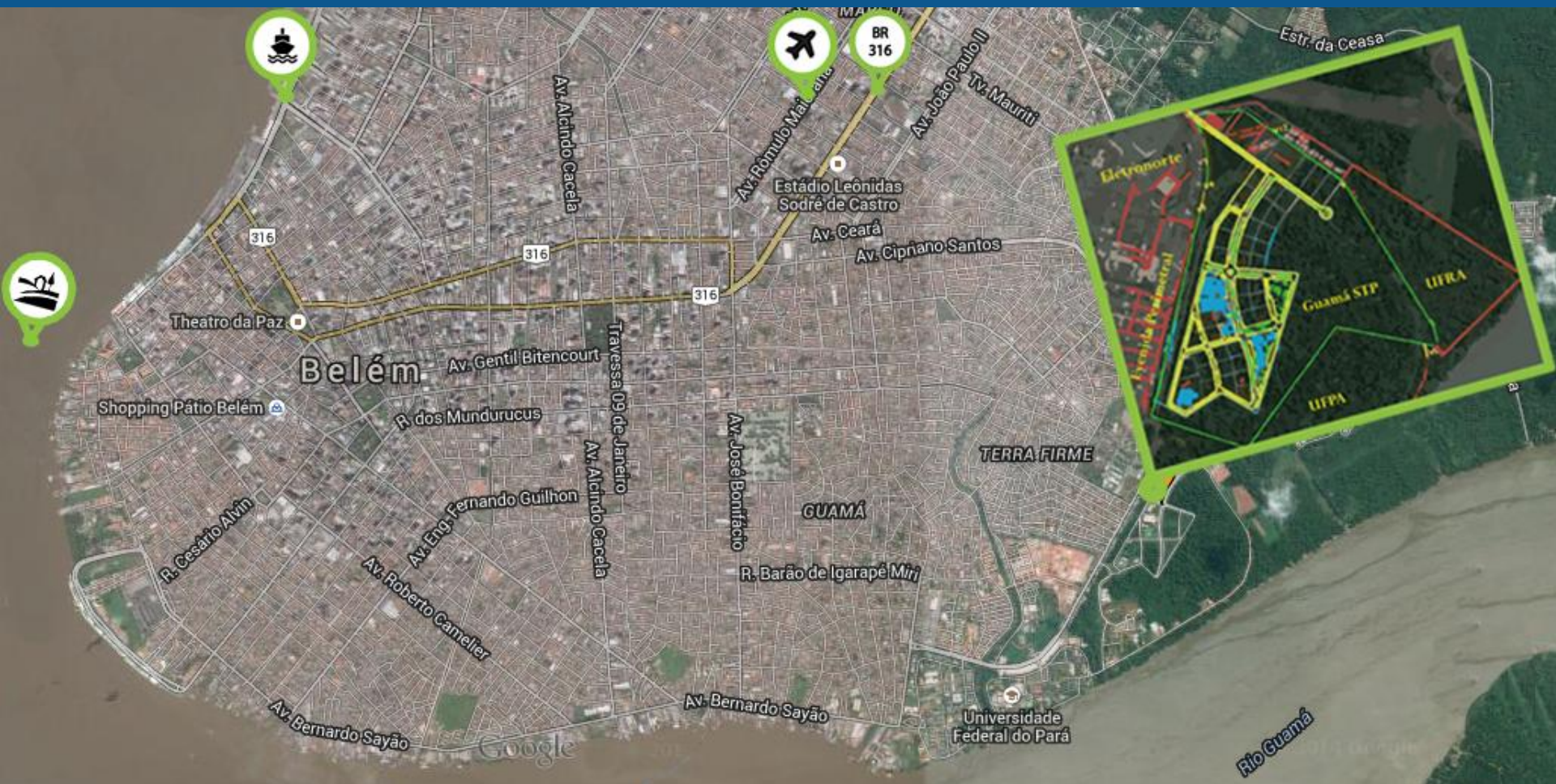
The Guamá Science and Technology Park (Guamá STP) has the role of contributing to a new model of development for the State of for, based on the knowledge economy, through the promotion of research and technological innovation and encouraging cooperation between institutions, universities and companies.

Priorities Areas:

- Biotechnology
- Energy
- Environmental Technology
- Communication and Information Technologies
- Mineral Technology




Strategic Location



DESCRIPTION

 **GUAMÁ**
Science and
Technology Park

 Vila do Conde Port;
52 Km far from
STP - GUAMÁ

 International Airport;
10 Km far from
STP - GUAMÁ

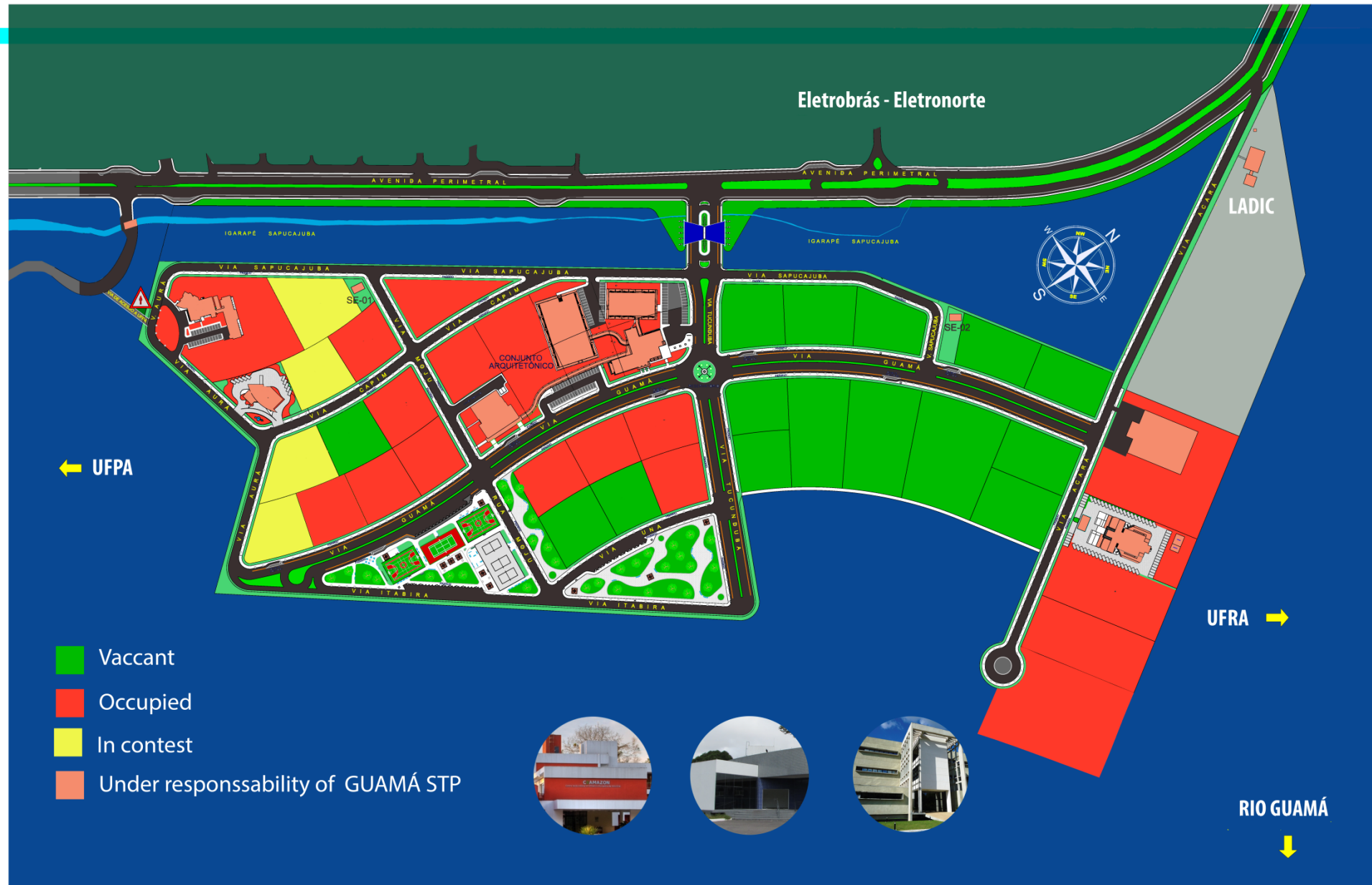
 Belém Port;
11 Km far from
STP - GUAMÁ

GUAMÁ - Science and Tecnology Park

Strategic Location

Building Area
~ 25 ha
Total Park Area
~ 72 ha

Status of the Enterprises and Institutions in Guamá STP



Attraction of enterprises

VENTURE	TECHNOLOGICAL FOCUS	INVESTMENTS
CEAMAZON	Energy	R\$ 6 million
CRA/INPE	Environmental Tech	R\$ 12 million
High Voltage Laboratory	Energy	R\$ 8 million
ITV (Vale)	Environmental Tech	R\$ 150 million
CEABIO	Biotechnology	R\$ 13 million
Milk Quality Laboratory	Biotechnology	R\$ 12 million
Parafarma	Biotechnology	R\$ 42 million
Amazonfer	Mineral Technology	R\$ 6 million
SENAI Innovative Institute	Mineral Technology	R\$ 51 million
		TOTAL: R\$ 300 million

Enterprises in incubation stage with support Guamá STP

VENTURE

TECHNOLOGICAL FOCUS

Amazon Dreams

Biotechnology

Amazon Biotech

Biotechnology

Amazônia Biotech

Biotechnology

Dynamis Techne

TIC

Inovar Soluções

TIC

Mundo Digital

TIC

Syanz

TIC



Innovation Space



40 offices for lease – 70 or 100 m²

6 Laboratories installed to offer support to your business

Investments of R\$25 million already obtained in equipment

Building conclusion – June/2015

Laboratories available at Guamá STP

Investments

Amazon Agrifood Center of Bioactive Compounds (Biotechnology)	10 million
Biologic Engineering (Biotechnology)	5 million
Agribusiness Instrumentation Products (Biotechnology)	2 million
Vegetal Oil and Derivatives (Biotechnology)	2 million
Plant Protection and Management Reference (Biotechnology)	2 million
Sensors and Embedded System (Information and Technology Communication)	3 million

Total: ~R\$ 25 million



Structure that enhances the businesses

Guamá Business - Unit created to support the demands of management in the area of technological innovation and intellectual property;

entrepreneurship,

Innovation Space - For enterprises, laboratories and research and development centers;

Business Incubator - For forthcoming ventures (startups);

Plug And Play Units - Rooms for temporary enterprises;

Corporate Services - Banks, restaurant, hotel, auditorium, video conferencing rooms and spaces for exhibitions.



Notices and visibility of the network of partners

Promotion of the brand of Guamá STP and the network of partners, through initiatives such as the I Conect network

Portfolio of Innovative Services which brings together the expertise of laboratories present in Guamá STP



Guamá STP on the internet

www.pctguama.org.br



More than 2.500
connections on LinkedIn



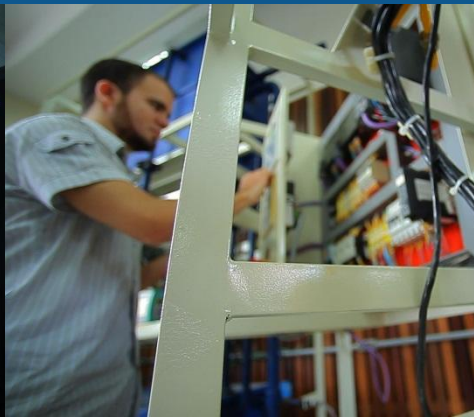
More than 220 followers
on Twitter



More than 1.080
connections on Facebook

Expected Impacts

- Fixing of intellectual capital
- Employment and income generation
- Stimulus to innovative entrepreneurship
- Support to the establishment of technology-based companies



Thanks!



Parceiros
Financieiros

Secretaria de Estado de Ciência,
Tecnologia e Educação Técnica
e Tecnológica



Parceiros
Apoiadores:



Secretaria de
Desenvolvimento
Econômico, Mineração e Energia



#AçaíValley

